



Red blood caused by the capillary and venous exposure, and the skin thinning is also one of the reason. 980nm red blood vessel laser machine adopts the wavelength of 980nm laser to removal the vascular, it effective to all reason caused capillary exposure. During the treatment, it can also stimulate the collagen of the skin to regrowth and increase skin thickness and density. In this way, vascular disappear and elastic of the skin increased. Porphyrin inside of the vessel absorb the 980nm laser and it caused the blood vessel coagulation and then it disappear, laser won't damage the skin at all.

## Technical Principle

1. Oriented conduction target action to the capillaries.
2. Instantaneous blasting hemoglobin in the capillary.
3. Redness gradually disappear, treating lesions problem.



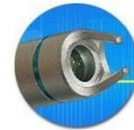
1. Positioning pin
2. Focusing ring
3. Optical lens group
4. The Shell of handle
5. Transmission optical



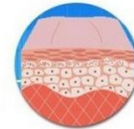
## Introduction



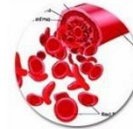
980nm laser is the optimum absorption spectrum of Porphyrin vascular cells. Vascular cells absorb the high-energy laser of 980nm wavelength, solidification occurs, and finally dissipated.



To overcome the traditional laser treatment redness large area of burning the skin, professional design hand-piece, enabling the 980nm laser beam is focused onto a 0.2-0.5mm diameter range, in order to enable more focused energy to reach the target tissue, while avoiding burn the surrounding skin tissue.



Laser can stimulate the dermal collagen growth while vascular treatment, increase epidermal thickness and density, so that the small blood vessels are no longer exposed, at the same time, the skin's elasticity and resistance is also significantly enhanced.



The Laser system based on the thermal action of the laser. The transcutaneous irradiation (with a penetration of 1 to 2 mm in the tissue) causes tissue selective absorption by hemoglobin (hemoglobin is the main target of the laser).



## Parts and control



Main machine



Pedal



key



goggles



eyeshade



Fiber handpiece



Vascular therapy system

OFF Indicator

1 2 3 4

FREQ

- 1 +

Current Time  
000000  
Toal count  
000026

CW Pulse S-Pulse

Energy regulation

- 025 +

Pulse width regulation

- 025 +

Standby

Ready





对话 最后上线时间于今天 17:40

对话 输入中...

对话 最后上线时间于今天 17:40

My pleasure 13:51 ✓

Could you tell me your specification you used? 12:51 ✓

I will do retreatment after 4 weeks 12:53

今天

Hello [redacted], how is the treatment result? 11:30 ✓

Sometimes they need 2 or 3 treatments for blood vessels to fully go but clients are very happy 12:51

No problem 12:53

I mean how is the treatment result of the vascular remove machine? 11:59 ✓

Do you mean parameters? 12:51

Which spot size 12:53 ✓  
2 for small or medium vessels on face  
2 or 3 for legs 12:54

Hi Yes 12:50

Yes yes 12:51 ✓

Yes results are very good thank you 12:50

I always start with 20 pulse width and 30j 12:52  
And look at response 12:52

What about spot size 1? 12:55 ✓

Could you tell me your specification you used? 12:51 ✓

If not good result at this energy, what will you do 12:52 ✓

Also sometimes i will treat same vessel 2 times in one session and its fine 12:56

Sometimes they need 2 or 3 treatments for blood vessels to fully go but clients are very happy 12:51

But I increase energy even up 45 if client is comfortable and reduce PW to 8 and results are excellent with this 12:52  
Also frequency is 5 always 12:52

I hardly ever use 12:56

You are very professional 12:56 ✓

Do you mean parameters? 12:51

Yes yes 12:51 ✓

Size 1 12:56

Lol 12:56

Thank you 12:56

